

Neptune UK Equity

Fund objective

To generate capital growth from investment predominantly in UK securities with the aim of achieving top quartile performance within the appropriate peer group.

Detailed fund information

Unit name Neptune UK Equity

Crown rating

OBSR rating n/a

S&P rating n/a

Sector UK All Companies

Launch date 31-Mar-2000

Fund size (as at 30-Jul-2010) £ 63.0m

Primary asset class Equity

Price and charges

Mid price (as at 04-Oct-2010) GBX 158.80

Initial charge 5.00%

Annual charge 1.60%

Investment

Minimum initial £1,000

Minimum additional £50

Dividend policy

Distribution dates - 31 August & 28 February

Codes

Citicode OP40

SEDOL 3060744

Management information

Fund manager Jeremy Smith

Start date 17-Jul-2006

Address Neptune Investment Management, PO Box 9004, Chelmsford, Essex

Tel 0800 587 5051 (Dealing)
0870 889 0540 (Fax Number)

Website <http://www.neptunefunds.com>

Email sales.enquiries@neptune-im.co.uk

Past performance overview fund vs. sector



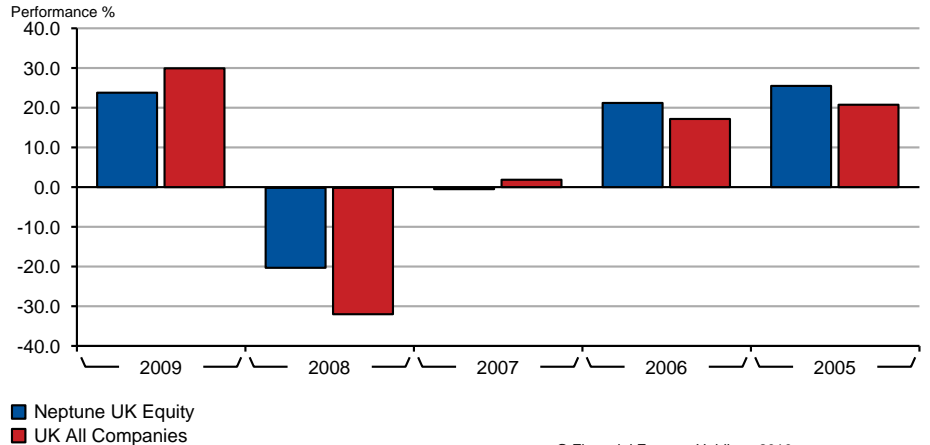
04/10/2005 - 04/10/2010 © Financial Express Holdings 2010

Cumulative performance (%)

	1m	3m	6m	1y	3ys	5ys
Neptune UK Equity	+4.2	+14.4	-3.3	+5.7	-0.6	+32.9
UK All Companies	+4.2	+15.3	+1.8	+15.2	-6.8	+20.1

Performance figures are calculated on a bid price to bid price basis. All prices in Pence Sterling (GBX) unless otherwise specified.

Discrete calendar year performance



© Financial Express Holdings 2010

Discrete performance (%)

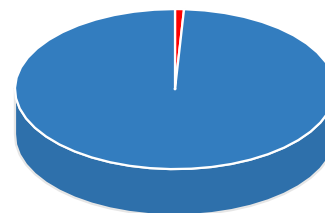
	YTD	2009	2008	2007	2006	2005
Neptune UK Equity	+3.4	+24.0	-20.3	-0.5	+21.4	+25.7
UK All Companies	+8.7	+30.1	-32.0	+2.0	+17.4	+20.9

Performance figures are calculated on a bid price to bid price basis. All prices in Pence Sterling (GBX) unless otherwise specified.

Neptune UK Equity

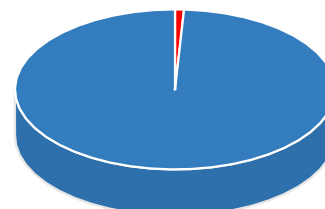
Asset allocation

Key	Rank	Asset class	% of Fund (30.07.2010)	% of Fund (30.06.2010)
A	1(1)	UK Equities	99.1	(97.8)
B	2(2)	Money Market	0.9	(2.2)



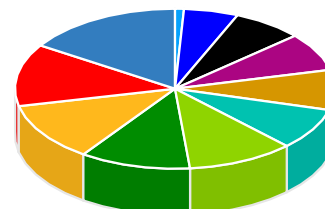
Regional breakdown

Key	Rank	Region	% of Fund (30.07.2010)	% of Fund (30.06.2010)
A	1(1)	UK	99.1	(97.8)
B	2(2)	Money Market	0.9	(2.2)



Sector breakdown

Key	Rank	Sector	% of Fund (30.07.2010)	% of Fund (30.06.2010)
A	1(2)	Financials	15.9	(13.6)
B	2(1)	Consumer Staples	12.6	(14.2)
C	3(3)	Consumer Discretionary	11.8	(12.4)
D	4(6)	Materials	11.2	(10.5)
E	5(4)	Energy	10.8	(11.0)
F	6(5)	Health Care	8.4	(10.6)
G	7(7)	Industrials	8.1	(9.9)
H	8(8)	IT	7.7	(7.0)
I	9(10)	Utilities	7.1	(3.8)
J	10(9)	Telecoms	5.5	(4.8)
K	11(11)	Money Market	0.9	(2.2)



Top ten holdings

No holdings data available